



UnderCover

SHEETING SYSTEM

transcover
we've got it covered!



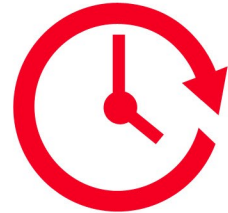
SAFE

Fast and efficient covering of even the most difficult loads safely from ground level.



SIMPLE

Installation takes just 24 man hours. The framework hydraulically extends widthways and reaches up/ over the load using levers (or remote control) to sit on the rear of the container, a spring in the roller extends/ retracts the tarp.



FAST

Covers in just 30 seconds!



Strong

Steel construction using proven spring retracting roller.



Rip resistant mesh or net options



Low profile & within width



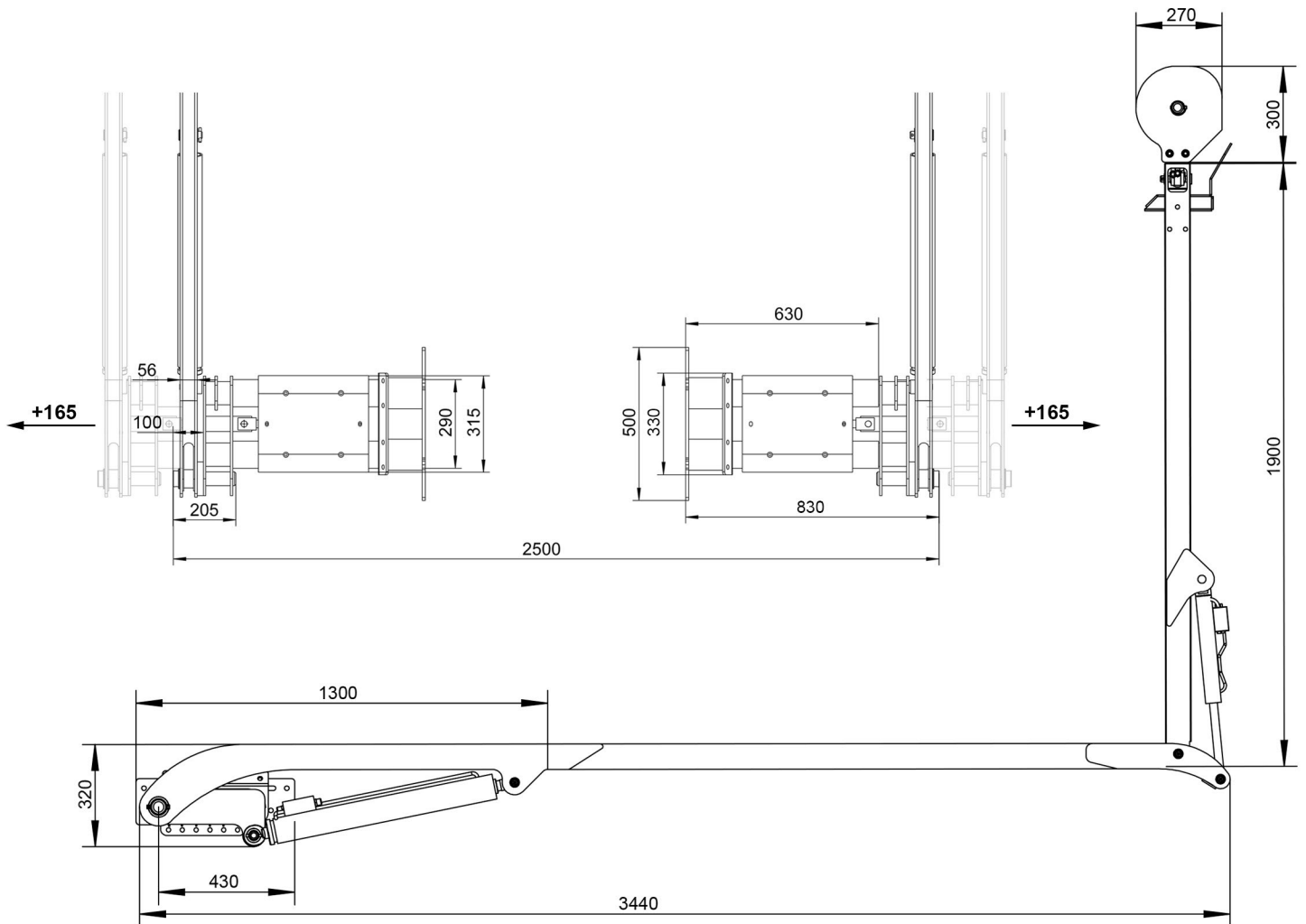
Warranty

See reverse for details



MANUFACTURED
BY TRANSCOVER





SYSTEM SPECIFICATIONS

Versions available

Hydraulic Wireless Remote
Hydraulic Tri-Lever Control

Body

CHEM and DIN standard versions (up to 7m)
CHEM and DIN standard Containers

Weight

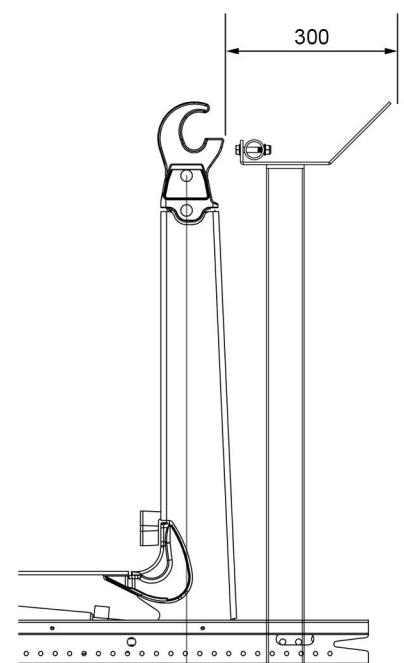
475kg

Tarps

Duramesh
Supermesh
Powermesh
Style Standard / Side-Flaps / X-Span

Warranty

1 year warranty



MOUNTING BRACKET PROVIDED TO SUIT MANUFACTURER